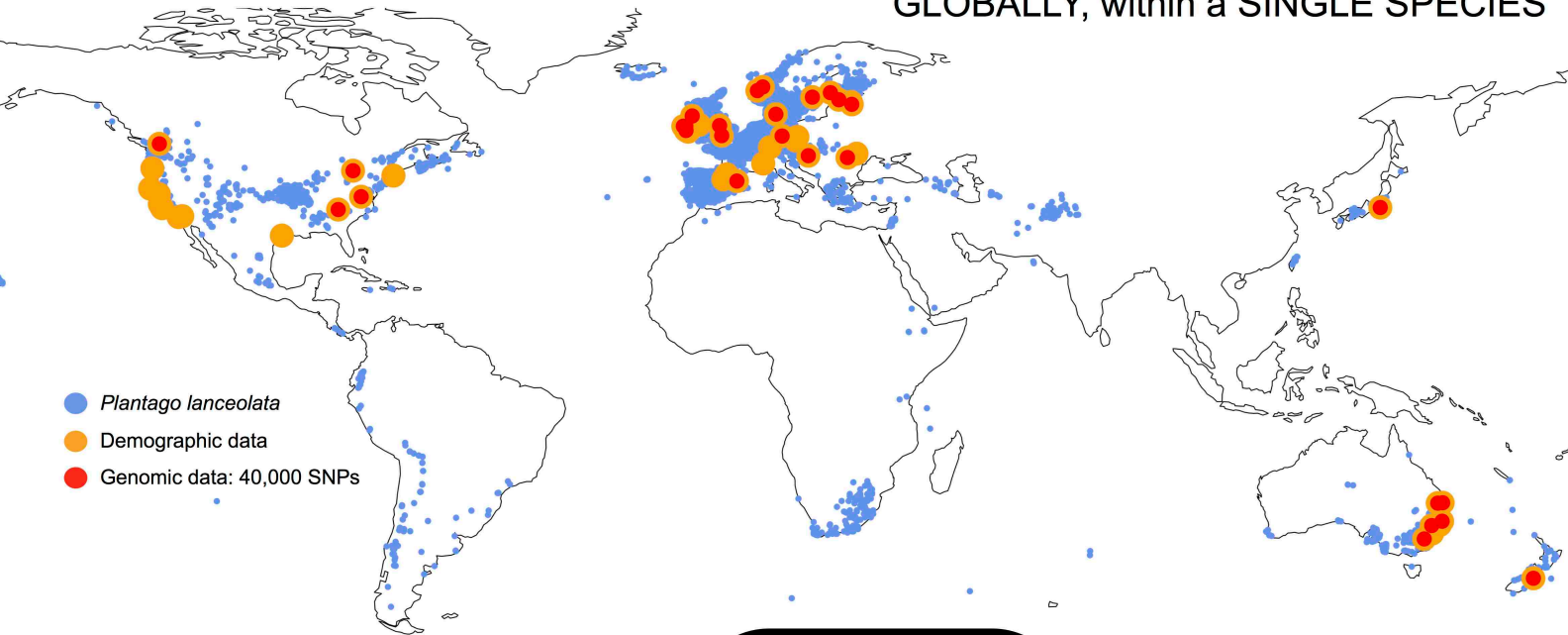


# Global demographic genomics

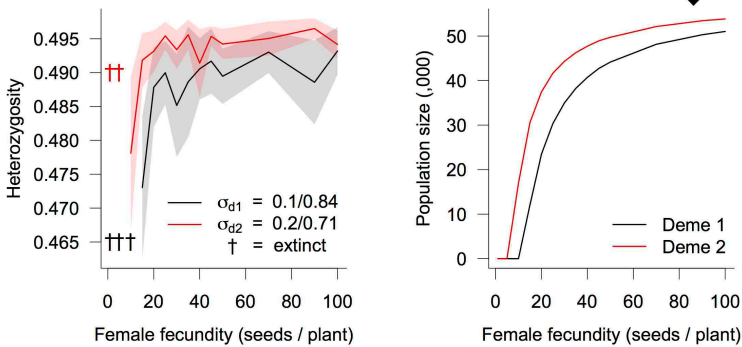


What is the demographic MECHANISM underlying environmental effects on genetic diversity?

For the FIRST TIME we can link demographic and genomic data GLOBALLY, within a SINGLE SPECIES



Survival & female fecundity influence genetic diversity

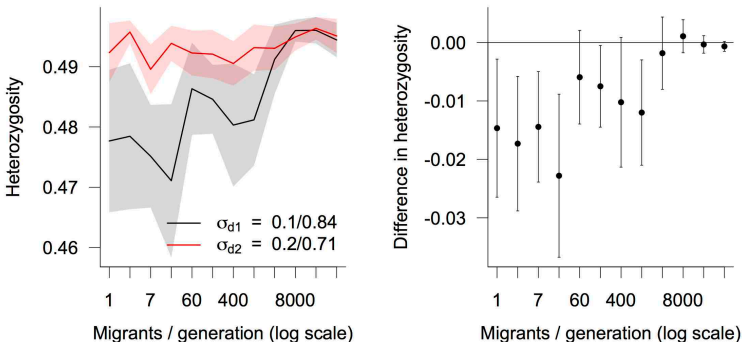


**SIMULATION**

**PLANTPOPNET DEMOGRAPHIC DATA:**  
Density: 103 / m<sup>2</sup> (range 15–400)  
Male fecundity: 10,000–54,000 grains / plant  
Female fecundity: 46 (0.66–209)  
Longevity: ~ 5 years  
Survival: seed → seedling → adult



Migration dilutes effects of demography



**HYPOTHESIS FOR SNP ANALYSIS:**  
Small changes in demography influence genetic diversity

Dr Annabel L. Smith  
Prof. Yvonne M. Buckley  
annabel@smithecology.org  
www.plantpopnet.com  
@plantpopnet

